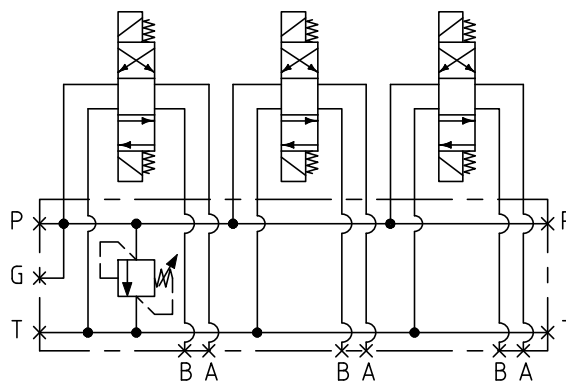




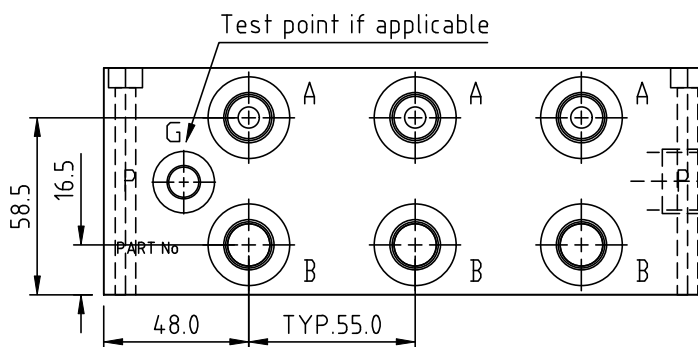
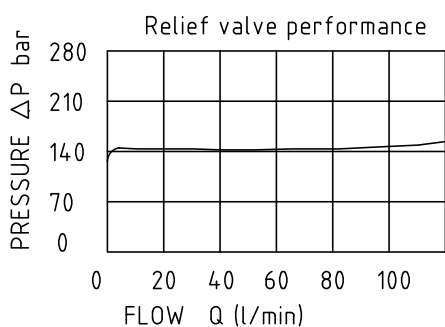
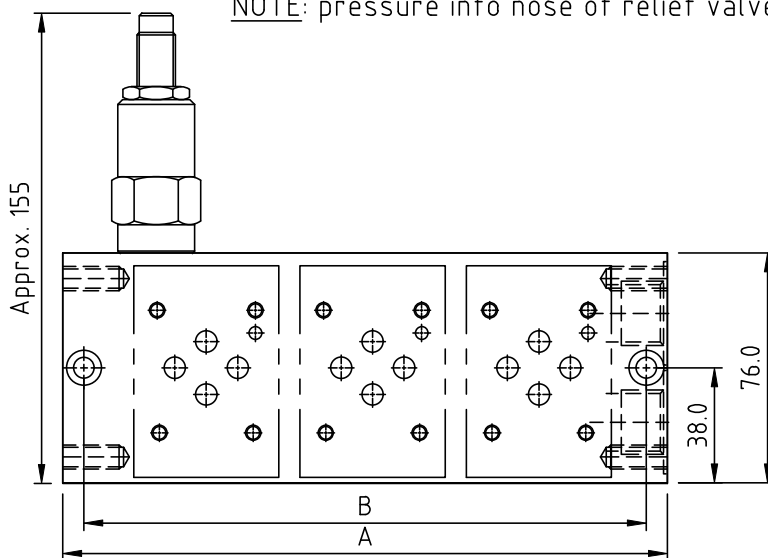
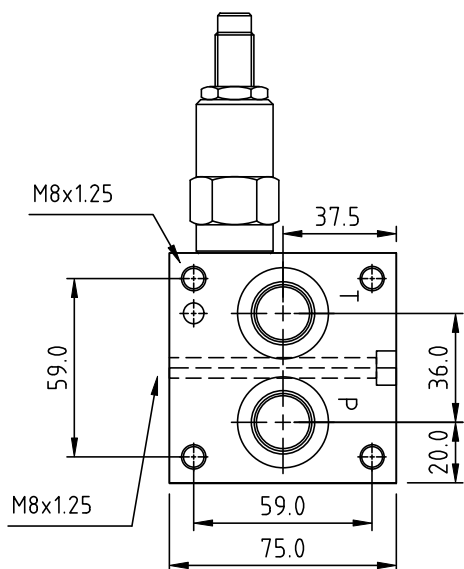
AMICIS MANUFACTURING Pty Ltd  
 59 Kremzow Road  
 Brendale, QLD 4500  
 Ph. 07 3063 7766  
 email: Sales@amicismfg.com.au

# MULTI-STATION CETOP 3 PARALLEL SUBPLATES (Aluminium/Steel)

Recommended pressure: 210/350 Bar (A/S)  
 Pilot relief valve: Rated flow: 95 l/min.  
 Adjustable: 10-315 Bar  
 Ports: P & T: 1/2" BSPP  
 A & B: 3/8" BSPP  
 G: 1/4" BSPP  
 Mounting: M6 SHCS or M8x1.25 Thread



NOTE: pressure into nose of relief valve



Note: Manifolds supplied with relief valve will have a test point G

HYT683/0904

Number of Stations	Without Relief Valve	With Relief Cavity	With Relief Valve	Dimensions		Approx. Weight (kg) (add 0.2 for relief)
	Ordering Code	Ordering Code	Ordering Code	Dim A (mm)	Dim B (mm)	
1	M3PA1#	M3PA1#-C	M3PA1#-R1	90	76	1.3/3.2
2	M3PA2#	M3PA2#-C	M3PA2#-R1	145	131	2.0/5.3
3	M3PA3#	M3PA3#-C	M3PA3#-R1	200	186	2.7/7.1
4	M3PA4#	M3PA4#-C	M3PA4#-R1	255	241	3.4/9.3
5	M3PA5#	M3PA5#-C	M3PA5#-R1	310	296	4.1/11.1
6	M3PA6#	M3PA6#-C	M3PA6#-R1	365	351	4.8/13.3
7	M3PA7#	M3PA7#-C	M3PA7#-R1	420	406	5.5/15.2
8	M3PA8#	M3PA8#-C	M3PA8#-R1	475	461	6.2/17.7

Other sizes made to order, prices available upon application.  
 Details within this catalogue are subject to change without notification.

NOTE: #=Material  
 A=Aluminium S=Steel

